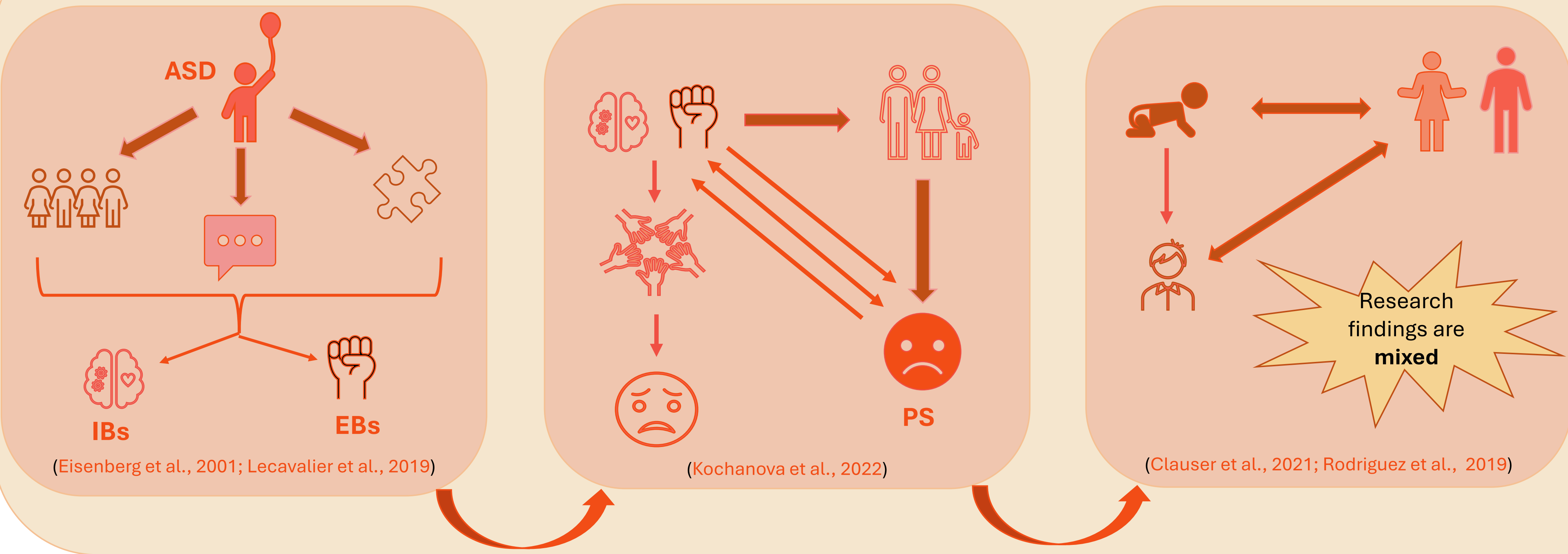


The associations between Internalizing/Externalizing behaviors in children with autism and parenting stress : A systematic review

1. INTRODUCTION



This review had four questions :

- (1) What type of IBs and EBs are most associated with PS ?
- (2) Are there differences in stress levels between fathers and mothers ?
- (3) Does age influence the intensity of IBs and EBs ?
- (4) How the transactional associations between these two variables evolve over time ?

2. METHODOLOGY

- Registration : PROSPERO database (CRD42024524871).
- The PRISMA-P and PRISMA guidelines were used.
- The AXIS in its short version was used to assess quality.

Inclusion criteria

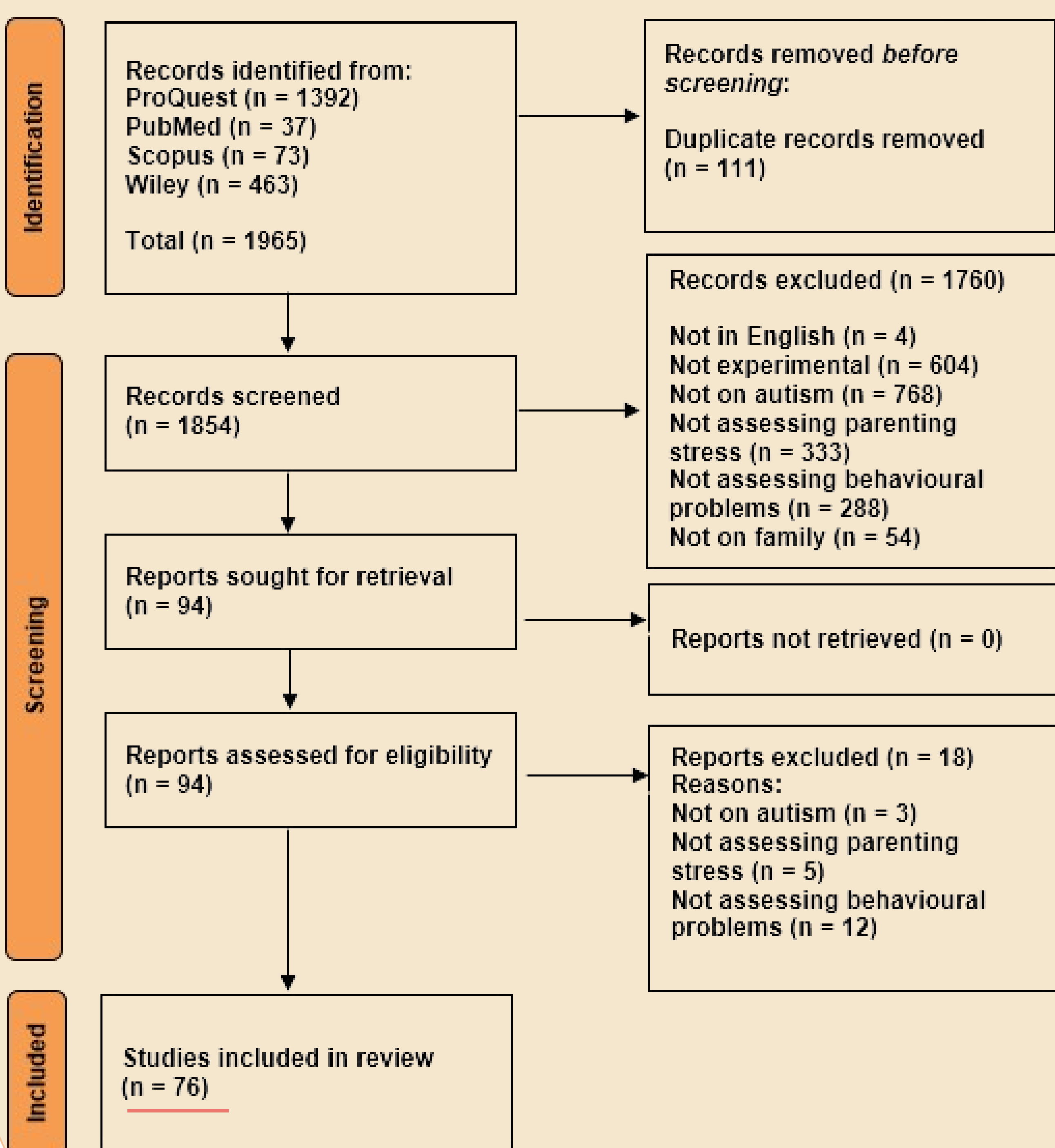
- ✓ Availability in English
- ✓ Quantitative studies
- ✓ Published in peer-reviewed journals

Exclusion criteria

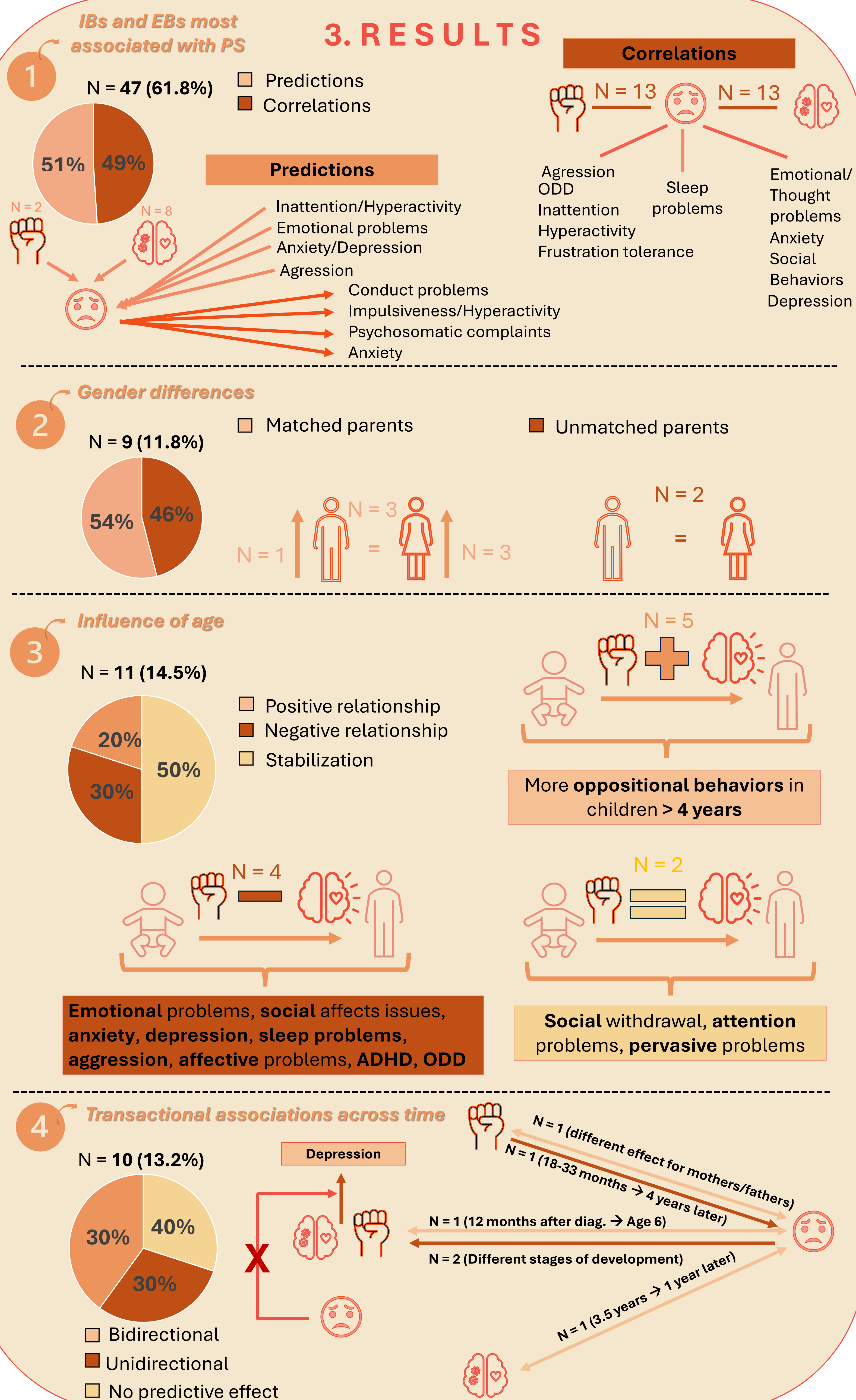
- ✗ Case reports
- ✗ Editorial reports
- ✗ Opinion papers
- ✗ Non-published dissertation papers

Figure 1. PRISMA flow diagram of studies selection process

Identification of studies via databases and registers



3. RESULTS



4. REFERENCES

- Clauser, P., Ding, Y., Chen, E. C., Cho, S., Wang, C., & Hwang, J. (2021). Parenting styles, parenting stress, and behavioral outcomes in children with autism. *School Psychology International*, 42(1), 33-56. <https://doi.org/10.1177/0143034320971675>
- Eisenberg, N., Cumberland, A., Spinrad, T. L., Fabes, R. A., Shepard, S. A., Reiser, M., Murphy, B. C., Losoya, S. H., & Guthrie, I. K. (2001). The relations of regulation and emotionality to children's externalizing and internalizing problem behavior. *Child development*, 72(4), 1112-1134. <https://doi.org/10.1111/1467-8624.00337>
- Kochanova, K., Pittman, L. D., & McNeela, L. (2022). Parenting Stress and Child Externalizing and Internalizing Problems Among Low-Income Families: Exploring Transactional Associations. *Child psychiatry and human development*, 53(1), 76-88. <https://doi.org/10.1007/s10578-020-01115-0>
- Lecavalier, L., McCracken, C. E., Aman, M. G., McDougle, C. J., McCracken, J. T., Tierney, E., Smith, T., Johnson, C., King, B., Handen, B., Swiezy, N. B., Eugene Arnold, L., Bearss, K., Vitiello, B., & Scahill, L. (2019). An exploration of concomitant psychiatric disorders in children with autism spectrum disorder. *Comprehensive psychiatry*, 88, 57-64. <https://doi.org/10.1016/j.comppsy.2018.10.012>
- Rodriguez, G., Hartley, S. L., & Bolt, D. (2019). Transactional Relations Between Parenting Stress and Child Autism Symptoms and Behavior Problems. *Journal of autism and developmental disorders*, 49(5), 1887-1898. <https://doi.org/10.1007/s10803-018-3845-x>